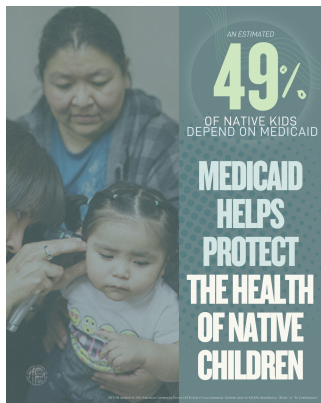


NCUIH Releases New Resource Highlighting Medicaid's Crucial Role for American Indian and Alaska Native Communities

Category: Policy Blog, Resources/one pagers

written by Meredith Raimondi | March 25, 2025

The National Council of Urban Indian Health (NCUIH) has released a comprehensive overview highlighting the crucial role Medicaid plays in providing health care to American Indian and Alaska Native (AI/AN) communities. This report emphasizes the importance of preserving Medicaid resources and exempting AI/AN beneficiaries from work requirements to fulfill the federal government's trust responsibility.



- Approximately 2.7 million AI/AN people are enrolled in Medicaid, with 24% of AI/AN adults aged 18-64 and 23% of those over 64 benefiting from the program.
- Almost 49% of AI/AN children are enrolled in Medicaid.
- Urban Indian Organizations serve as vital health care providers.
 - 59% of AI/AN people receiving care at UIOs are Medicaid beneficiaries.
 - Eight out of the top ten states with the largest number of AI/AN Medicaid beneficiaries have UIOs providing essential services.

Call to Action

Preserve Medicaid Resources

- Cuts to Medicaid would severely impact AI/AN health care access, necessitating state funding gaps and reducing essential services like diabetes programming and cancer screenings.

Exempt AI/AN Beneficiaries from Work Requirements:

- Mandatory work requirements would disproportionately affect AI/AN beneficiaries due to unique economic challenges. Exemption is crucial to protect health care access, consistent with the Indian Health Care Improvement Act.

Percentage of American Indian and Alaska Native Population on Medicaid by State and Age Range:

Below is a table of Medicaid data for the AI/AN population, based on the American Community Survey data (2023, 1-year estimate).

State	0-18 % of AI/AN Pop on Medicaid	19 - 64 % of AI/AN Pop on Medicaid	65+ % of AI/AN Pop on Medicaid
Alabama	58.84	14.97	22.11
Alaska	55.85	36.74	33.21
Arizona	48.31	29.57	30.78
Arkansas	47.24	23.11	16.94
California	47.16	26.66	26.25
Colorado	49.51	26.06	27.58
Connecticut	44.46	37.48	19.05
Delaware	56.56	21.19	20.40
District of Columbia	31.99	4.85	24.97
Florida	39.17	13.3	20.23
Georgia	44.67	12.10	16.88
Hawaii	44.49	25.28	20.44
Idaho	29.99	23.67	15.58
Illinois	47.78	19.71	17.96
Indiana	46.63	28.09	23.48
Iowa	54.32	23.95	19.33
Kansas	39.11	14.84	19.97
Kentucky	61.44	32.86	23.60
Louisiana	50.16	28.86	22.90
Maine	62.81	36.51	29.80
Maryland	40.43	17.56	19.58
Massachusetts	51.09	37.18	41.82
Michigan	47.32	29.74	16.24
Minnesota	50.35	32.43	14.18
Mississippi	65.29	14.60	26.81
Missouri	55.78	20.56	19.62
Montana	68.30	42.37	26.44
Nebraska	52.94	25.51	28.72
Nevada	41.06	22.72	19.65
New Hampshire	51.70	24.62	35.66
New Jersey	57.23	19.83	10.63
New Mexico	71.65	43.62	35.09
New York	49.32	30.94	33.53
North Carolina	57.28	21.29	23.66
North Dakota	63.34	37.79	17.69
Ohio	46.73	27.70	27.55
Oklahoma	51.42	21.62	17.18
Oregon	59.71	33.21	25.83
Pennsylvania	50.85	32.67	30.96

Rhode Island	46.77	25.63	16.85
South Carolina	40.89	18.65	18.50
South Dakota	60.30	26.67	30.01
Tennessee	51.66	22.20	22.64
Texas	35.10	9.37	16.87
Utah	29.98	20.95	18.67
Vermont	73.74	33.13	24.74
Virginia	37.40	21.24	13.27
Washington	49.27	27.90	18.98
West Virginia	45.81	32.73	10.62
Wisconsin	53.46	27.34	15.72
Wyoming	52.42	19.57	15.07
All States + DC	48.68	24.22	22.97